

# PREHISTORIC MAN CASTS

FOR SALE BY

WARD'S NATURAL SCIENCE ESTABLISHMENT

84-102 College Avenue

Rochester, N. Y.



2059



2000



2057



## PREHISTORIC REMAINS

### *Eoanthropus dawsonii*

Restoration of skull and mandible of Piltown man \$25.00

### *Homo heidelbergensis*

The Mauer jaw. More primitive than the Neanderthal type.  
Cast No. 3152. \$5.00

### *Homo neanderthaloides* or *primigenius*

The *Neanderthal cranium*, from the Valley of Neander, Rhenish Prussia. Cast No. 2000. \$2.50

*The Men of Spy*, found in a cave near Spy, Belgium.

Cast of cranium No. 1. Cast No. 2003. \$2.50

Cast of cranium No. 2. Cast No. 2014. \$3.00

*The Brünn crania*, found in the Löess, Brünn, Mähren, Germany.

Cast of cranium No. 1. Cast No. 3151. \$3.00

Cast of cranium No. 2. Cast No. 3144. \$3.00

### *Homo sapiens*

*The Engis cranium*, found in a cave on the bank of the Meuse, near Liege, Belgium. Cast No. 2002. \$2.50

*The Cro Magnon skulls*, found in caves at les Eyzias Tayac District, Dordogne, France.

*Cro Magnon No. 1* (Old Man of Cro Magnon).

Skull with lower jaw. Casts Nos: 3090 and 3091. \$4.00

*Cro Magnon cranium No. 2*. Cast No. 3089. \$3.00



No. 2099. **Marrow Spoon**, made of reindeer horn, surface elaborately carved, length 7½ inches. Now in the collection of Lartet and Christy.

**Langerie Basse, Dordogne, France** - - \$2.00



2093

No. 2085. **Sculptured Poniard**, from a single piece of reindeer horn, the handle representing the animal itself. This weapon was intended for thrusting and not for cutting; length 15½ inches. Now in the Musee St. Germain.

**Langerie Basse, Dordogne, France** - - \$3.50



2089

No. 2090. **Reindeer sculptured** in the round from ivory. The front was probably prolonged into a poniard blade, for which this body formed an excellent handle that could be firmly gripped; length 4½ inches. Now in the collection of M. Peccodean de l'Isle.

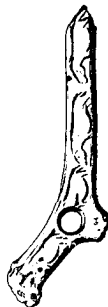
**Bruniquel, Tarn-et-Garonne, France** - - \$2.00



2085

No. 2096. **Reindeer sculptured**, quite similar to No. 2090, carved in the round. At the rear extended the blade of the poniard, of which this formed the handle. Of it Thomas Wilson says: "It is one of the most important specimens of sculpture yet found belonging to Paleolithic man." Length 4½ inches. Now in the British Museum.

**Bruniquel, Tarn-et-Garonne, France.** - - \$2.00



2094

No. 2089. **Mammoth**, carved as handle of poniard from reindeer horn. The tail was broken while in process of manufacture or in use, and the same or some other paleolithic artist has repaired it by drilling a hole in the back and inserting a new tail. Length 5 inches.

**Bruniquel, Tarn-et-Garonne, France** - - \$2.50



2090

No. 2094. **Baton de commandement**, with three horses engraved on one side, four on the other, made from shed reindeer antlers. Length 12½ inches. Now in the Musee St. Germain.

**La Madelaine, Dordogne, France** - - \$2.50



2095

No. 2095. **Baton de commandement**, of reindeer horn with engraving of fish on all sides. Length 12 inches. Now in the collection of Lartet and Christy.

No. 2100. **Baton de commandement**. This is a fragment with engraving of man with stick over his left shoulder, two horses heads, and serpent or eel, on a beam of reindeer horn. On the other side are two heads of calves. Length 6¼ inches. Now in Musee St. Germain.

**La Madelaine, Dordogne, France** - - \$2.00



2088

No. 2088. **The Bison or Ox** represents a man chasing an aurochs or bison engraved on reindeer horn. The man follows the bison and is in the act of throwing a spear or harpoon at him. On the reverse side a female bison is also depicted. Length 10 inches. Now in the collection of M. Massenet.

**Langerie Basse, Dordogne, France** - - \$2.00



2097



2086

No. 2086. **Bull Bison** or other bovine animal, engraved on reindeer's brow antler palm. The forepart of the animal is broken away. The drawing is very bold and clear cut. Length 6 inches.

Langerie Basse, Dordogne, France - - \$2.00



2087

No. 2087. **Ibex or Wild Goat**, engraved on a palm of a reindeer's brow antler. Length 5½ inches.

Langerie Basse, Dordogne, France - - \$1.25



2092

No. 2092. **Stag** engraved on fragment of antler, with portion hole drilled in one end, a few decorative lines on the opposite side. Length 4¼ inches.

La Madelaine, Dordogne, France - - \$1.50

No. 2097. **Mammoth** engraved on a laminated fragment of his own tusk. Size 10 x 4 inches. Now in the Museum of Natural History, Paris.

La Madelaine, Dordogne, France - - \$2.50

### A Few Reproductions of American Indian Artifacts

No. 2075. Leaf shaped flint blade from Wisconsin, in the collection of Colonel Perkins. Length 9½ inches. - - \$3.00

No. 2062. Stone "Pigeon Hawk" pipe from Maury Co., Tenn. Length 10 inches. - - \$4.00

No. 2136. Human effigy stone pipe from Morrow Co., Ohio. In collection of J. P. MacLean. Length 5 inches. - - \$4.50

No. 2081. Jar found in Colchester, Vermont, and now in University of Vermont Museum. Height 7½ inches. - - \$6.00

No. 2038. Effigy pot from mound at Marietta, Ohio. Original burned in Doeiful Museum. Height 11½ inches. - - \$8.00

No. 2032. Sacrificial jug. Pottery from Temple Mound, near Natchez, Miss. Owned by T. Diekert. Height 4 inches. \$3.00



2136



2032



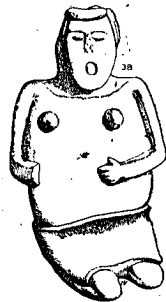
2075



2062



2081



2038

## Ward's Natural Science Establishment

84-102 College Avenue, Rochester, N. Y.